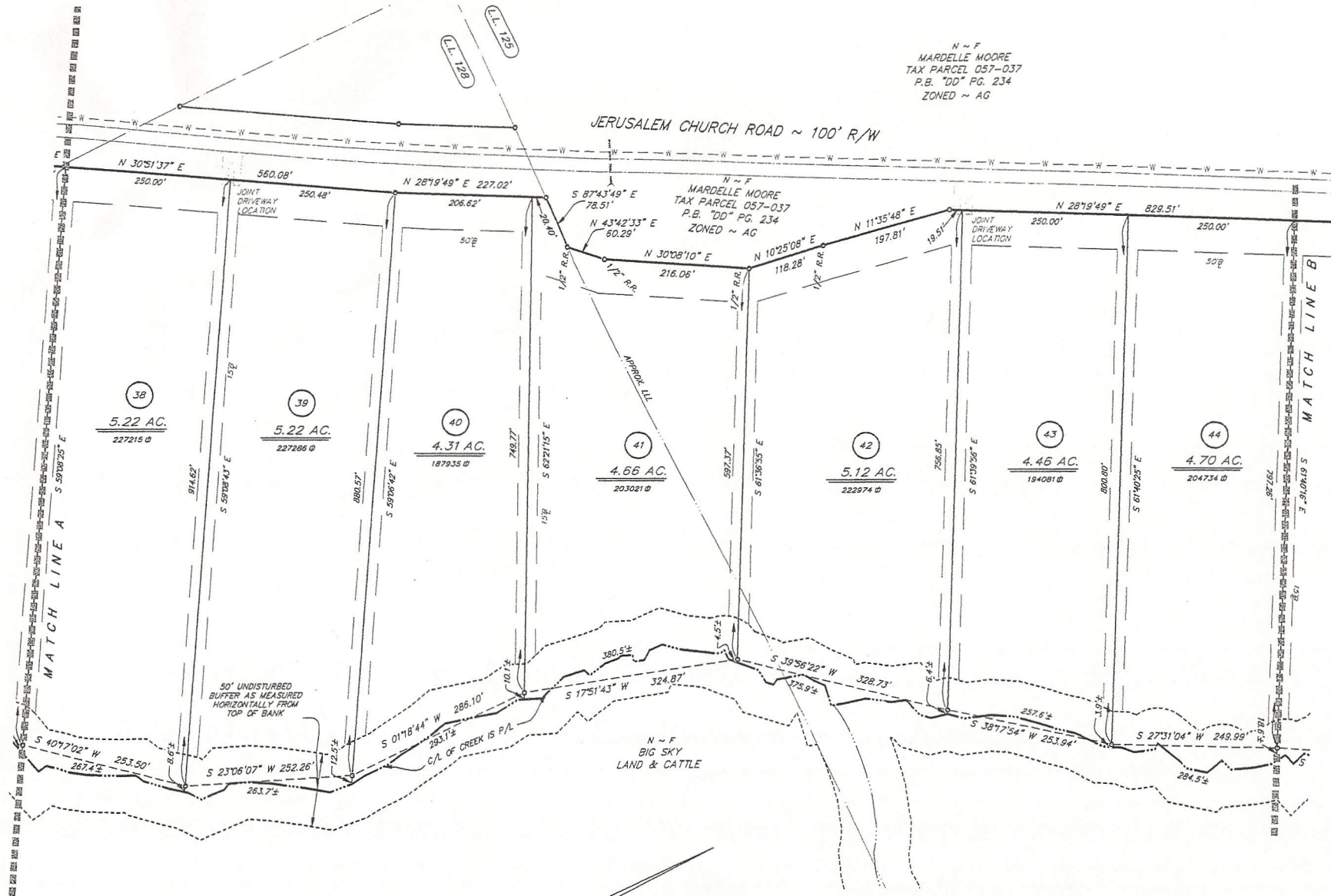


N ~ F
 MARDELLE MOORE
 TAX PARCEL 057-037
 P.B. "DD" PG. 234
 ZONED ~ AG

JERUSALEM CHURCH ROAD ~ 100' R/W



MATCH LINE A

MATCH LINE B

- DRIVEWAY NOTES:**
1. DRIVEWAYS ARE TO BE INSTALLED PER LOCATIONS SHOWN ON THIS PLAT AND MUST BE APPROVED BY PICKENS COUNTY RIGHT-OF-WAY DEPARTMENT.
 2. DRIVEWAYS ARE TO BE INSTALLED PER DETAIL ON PAGE 1 OF FINAL PLAT.

GRID NORTH - GA NAD WEST ZONE



DATE	3/30/07	REVISIONS
SCALE	1"=100'	9/14/07 REV. #1
DRAWN BY	SLJ	
CHECKED BY	SLR	
FIELD BOOK	N/A	

FINAL PLAT FOR:
**LITTLE CREEK FARMS
 UNIT 1**

Gaskins
 ENGINEERING • SURVEYING • LAND PLANNING • ENVIRONMENTAL
 1500 Oakside Drive, Suite 4
 Canton, Georgia 30114
 Phone: (770) 479-9699
 Fax: (770) 479-7943

LOCATED IN L.L. 126
 23rd DISTRICT, 2nd SECTION
 PICKENS COUNTY, GA. SHEET 7 OF 10

Drawing name: D:\1157 (Data Turner)\Little Creek Farms (CAG)\Surveying\PLAT\01\1157.dwg
 Plotted on: Sep 28, 2007 - 3:11pm
 Plotted by: Kim Prosser