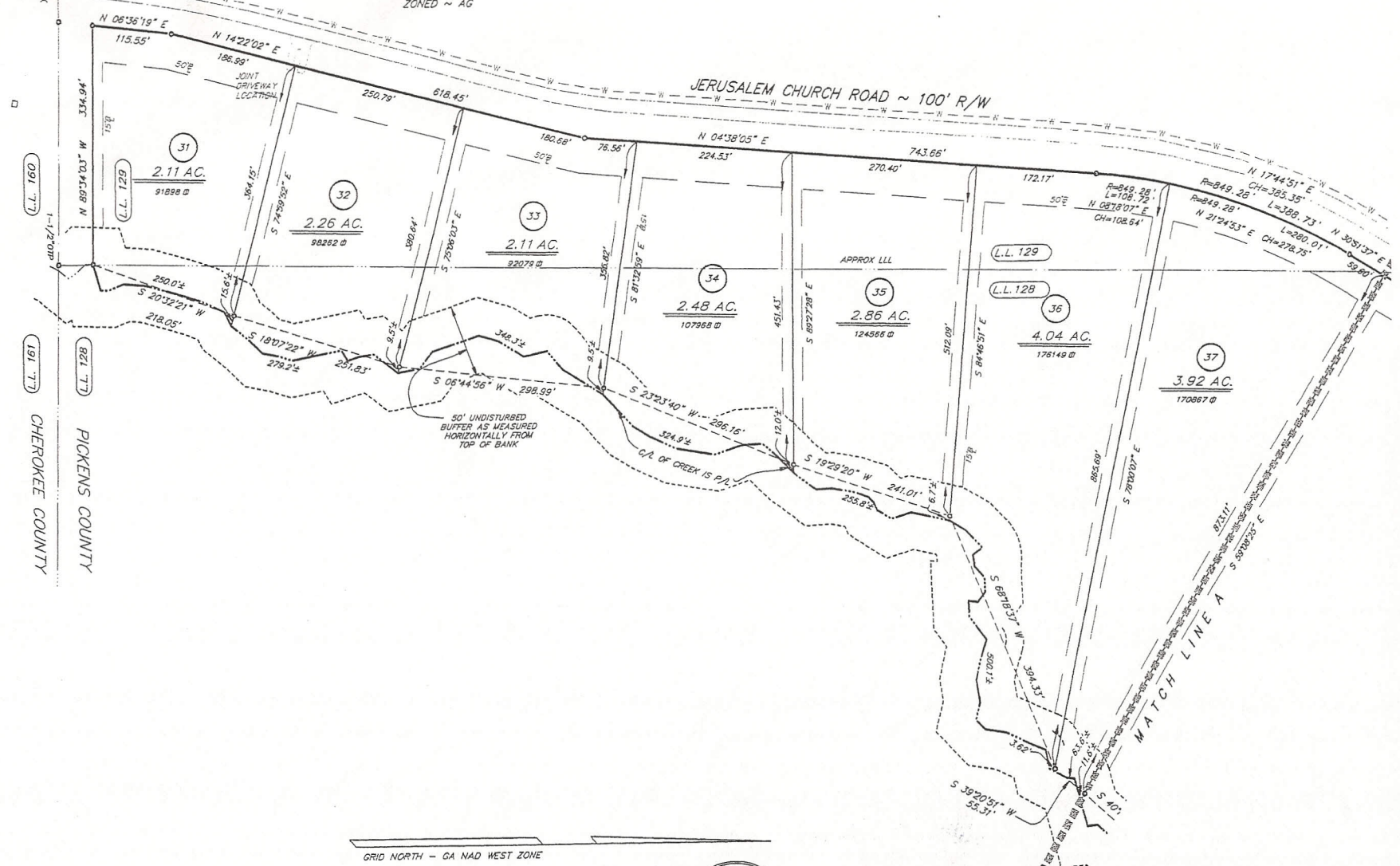
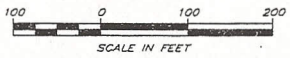


N ~ F
R.M. EDGE
TAX PARCEL 058-097
ZONED ~ AG

JERUSALEM CHURCH ROAD ~ 100' R/W



GRID NORTH - GA MAD WEST ZONE



- DRIVEWAY NOTES:**
1. DRIVEWAYS ARE TO BE INSTALLED PER LOCATIONS SHOWN ON THIS PLAT AND MUST BE APPROVED BY PICKENS COUNTY RIGHT-OF-WAY DEPARTMENT.
 2. DRIVEWAYS ARE TO BE INSTALLED PER DETAIL ON PAGE 1 OF FINAL PLAT.

DATE	: 3/30/07	REVISIONS
SCALE	: 1"=100'	9/14/07 REV. #1
DRAWN BY	: SLR	
CHECKED BY	: SLR	
FIELD BOOK	: N/A	

FINAL PLAT FOR:
**LITTLE CREEK FARMS
UNIT 1**

Gaskins
ENGINEERING • SURVEYING • LAND PLANNING • ENVIRONMENTAL
1300 Oakdale Drive, Suite 4
Canton, Georgia 30114
Phone: (770) 479-6698
Fax: (770) 479-7943

LOCATED IN L.L. 126
23rd DISTRICT, 2nd SECTION
PICKENS COUNTY, GA. SHEET 6 OF 10

Plotted on: Sep 28, 2007 - 3:09pm
 Drawn by: Scott Reese
 Checked by: Scott Reese
 Date: 9/14/07
 Title: Little Creek Farms Unit 1
 File: LCRF-01-Plat-6.dwg